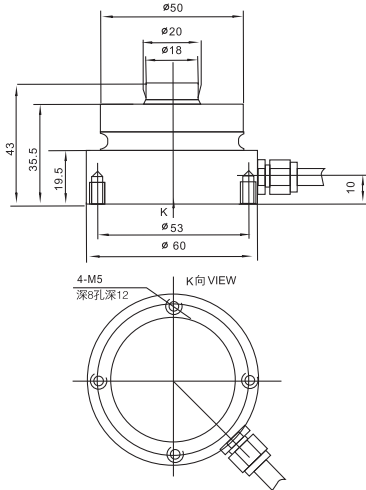




NHS-A/-ASS Loadcell

NHS-A/-ASS

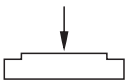
1~4.7t



Axle-load scale, hopper scale, warehouse scale, silo scale

10~100t

| Rated Load(t) | A | B | C | D | E | H | K | J | N |
|---------------|-----|-----|-----|-----|-----|-----|----|------|----|
| 10~22 | 45 | 75 | 55 | 80 | 100 | 95 | 20 | 11.5 | 10 |
| 33 | 58 | 95 | 68 | 95 | 120 | 120 | 25 | 13 | 12 |
| 47 | 80 | 130 | 92 | 130 | 170 | 140 | 30 | 17.5 | 20 |
| 68 | 80 | 130 | 92 | 130 | 170 | 150 | 30 | 17.5 | 20 |
| 100 | 100 | 150 | 110 | 150 | 200 | 177 | 40 | 25 | 22 |
| 150 | 100 | 150 | 110 | 150 | 200 | 187 | 40 | 25 | 22 |



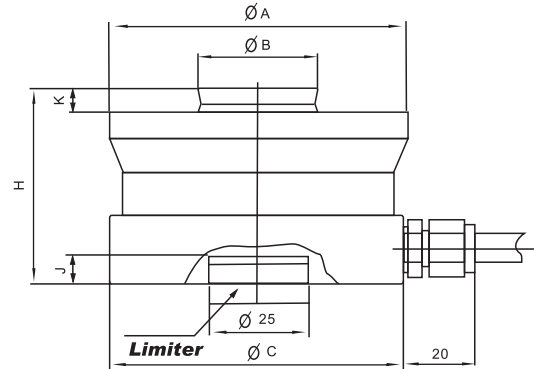
Thickness of the limited pin is 10mm, recommended depth for the installation base plate is 6mm

Axle wheel scale, hopper scale, Silo scale

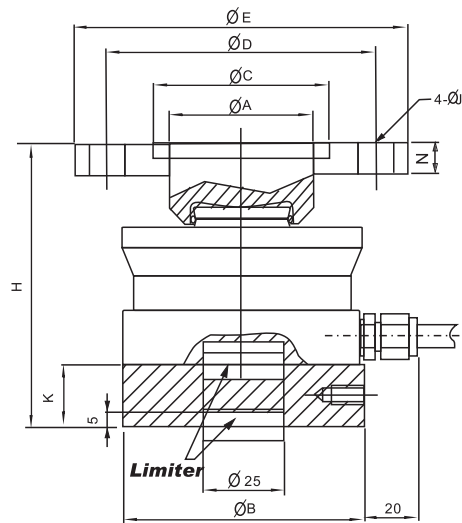
TECHNICAL PARAMETER | OAP version 4Wires:Exc+(Blue);Exc-(Black);Sig+(White);Sig-(Red)

| | | | |
|------------------------|--|--------------------------------|--|
| Rated capacities(Emax) | 1,2,2,3,3,4,7,10,15,22,33,47,68,100,150t | Temperature range, compensated | -10°C~+40°C |
| Sensitivity | 2.85±0.015mV/V | Temperature range, operating | -30~+70°C |
| Total error | ±0.03, ±0.05, ±0.1%F.S | Maximum safe overload | 150%F.S |
| Creep error (30min) | ±0.03%F.S | Ultimate overload | 200%F.S |
| Zero balance | ±1%F.S | Excitation, recommended | 10~12V DC |
| TC ZERO | ±0.03%F.S/10°C | Excitation, maximum | 15V DC |
| TC SPAN | ±0.03%F.S/10°C | Protection class | IP68 |
| Input resistance | 1450±10Ω | Construction | Alloy Steel Stainless Steel |
| Output resistance | 1402±5Ω (L≥15m) | Cable | Length=L:8m(1~4.7t), 12m(10~33t), 16m(47~150t) |
| Insulation resistance | ≥5000MΩ | | Diameter: φ 6mm |

10~150t



10~100t





NHS-A/-ASS Loadcell

NHS-A/-ASS

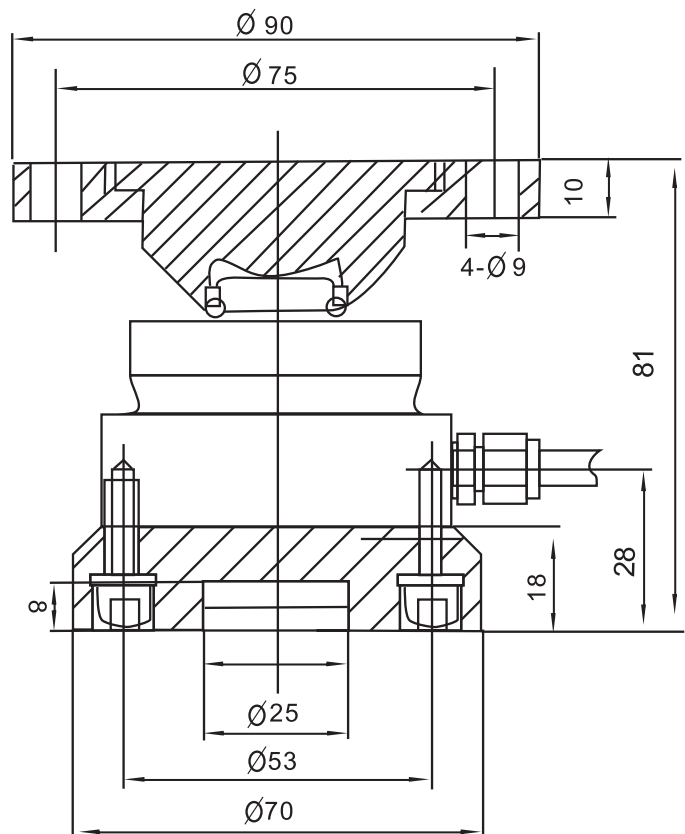
10~150t

10~150t

| Rated Load(t) | A | B | C | H | J | K |
|---------------|-----|----|-----|-----|---|-----|
| 10~22 | 75 | 30 | 75 | 50 | 7 | 6.5 |
| 33 | 95 | 40 | 95 | 65 | 7 | 10 |
| 47 | 130 | 60 | 130 | 75 | 7 | 14 |
| 68 | 130 | 60 | 130 | 85 | 7 | 14 |
| 100 | 150 | 70 | 150 | 90 | 7 | 16 |
| 150 | 150 | 70 | 150 | 100 | 7 | 16 |



1~4.7t





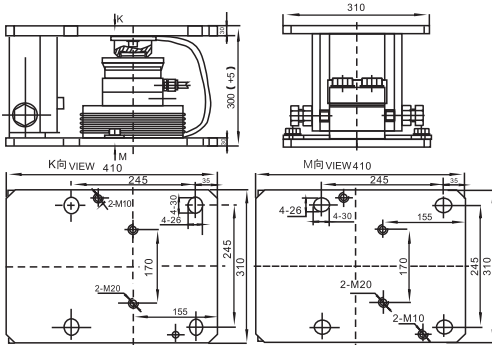
NHS-A/-ASS Loadcell

NHS-A/-ASS

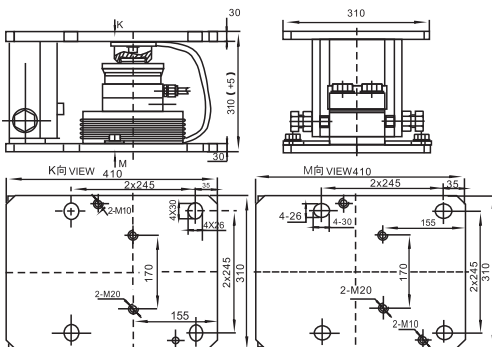


| Rated Load (t) | H |
|------------------|-----|
| 47 | 230 |
| 68 | 240 |

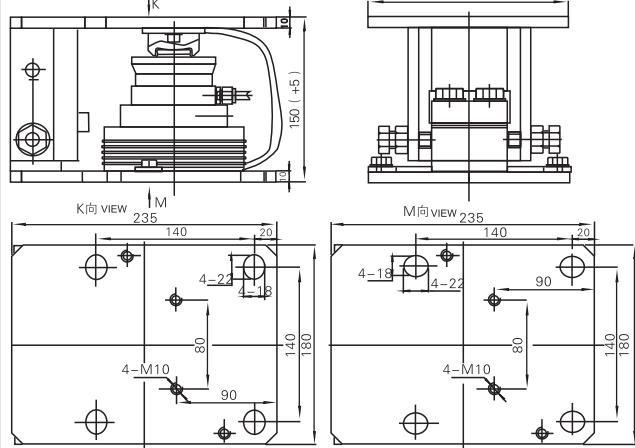
NHS 100t



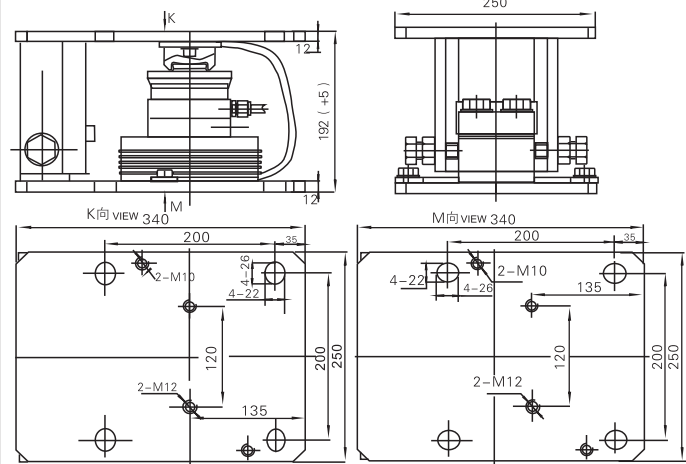
NHS 150t



NHS 10~22t Module



NHS 33t Module



NHS 47~68t Module

